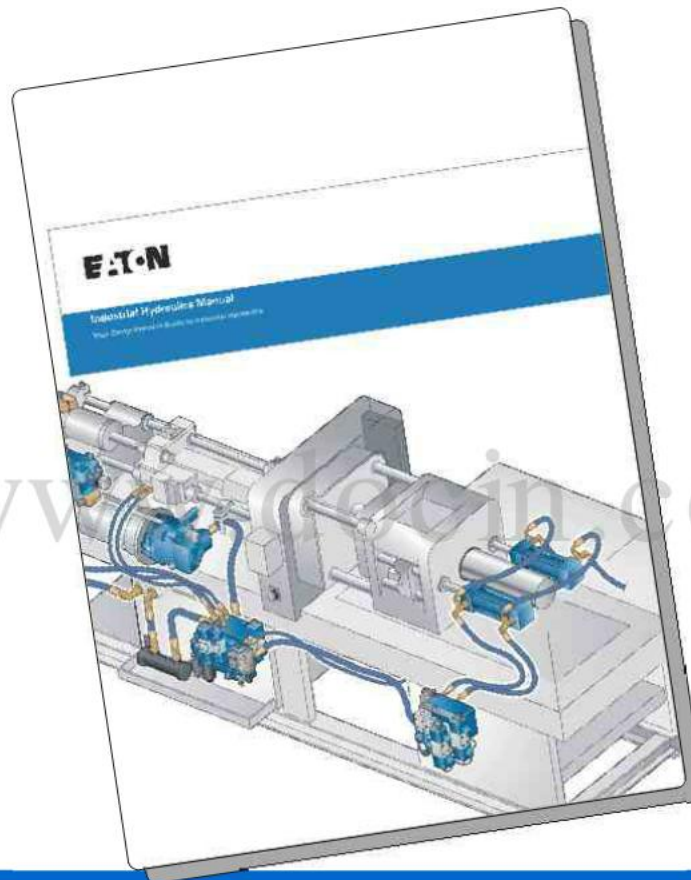


# CHAPTER 10

## PRESSURE CONTROLS



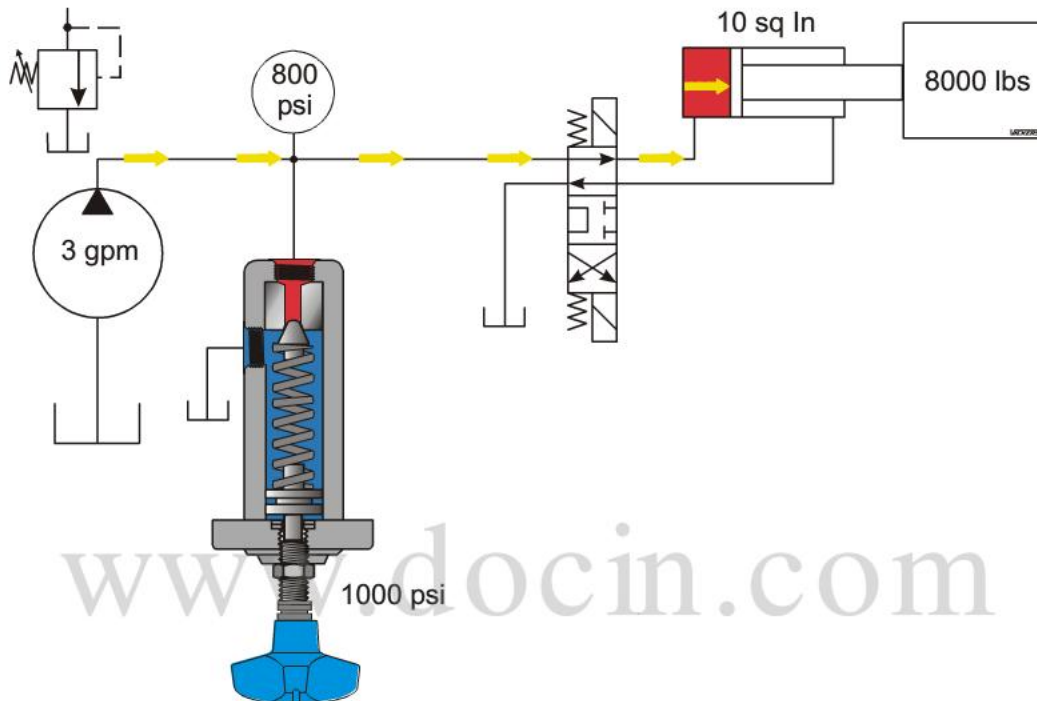


Figure 10-1 Direct acting relief valve

COPYRIGHT © (2001) EATON CORPORATION

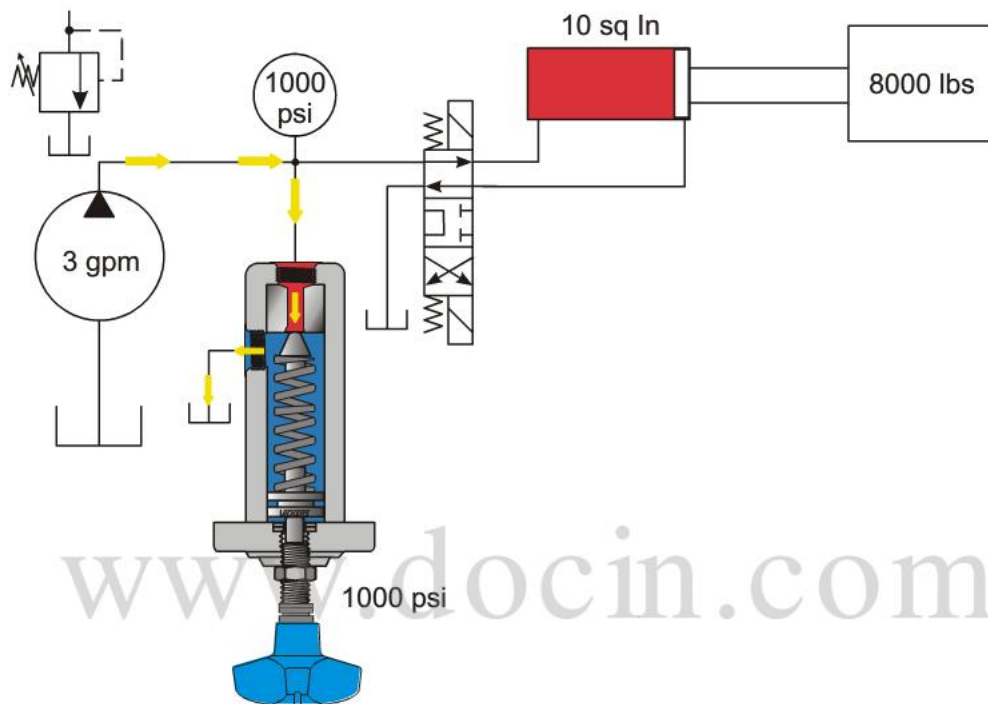


Figure 10-2 Valve opens when preset pressure is reached

COPYRIGHT © (2001) EATON CORPORATION

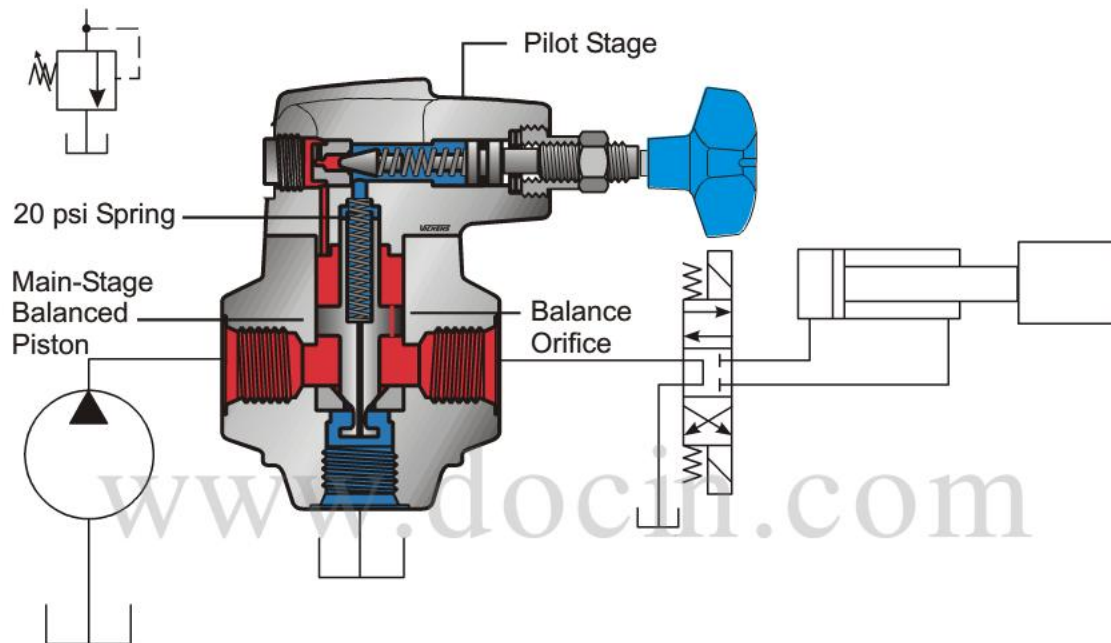


Figure 10-3 A Balanced piston, pilot operated relief valve

COPYRIGHT © (2001) EATON CORPORATION

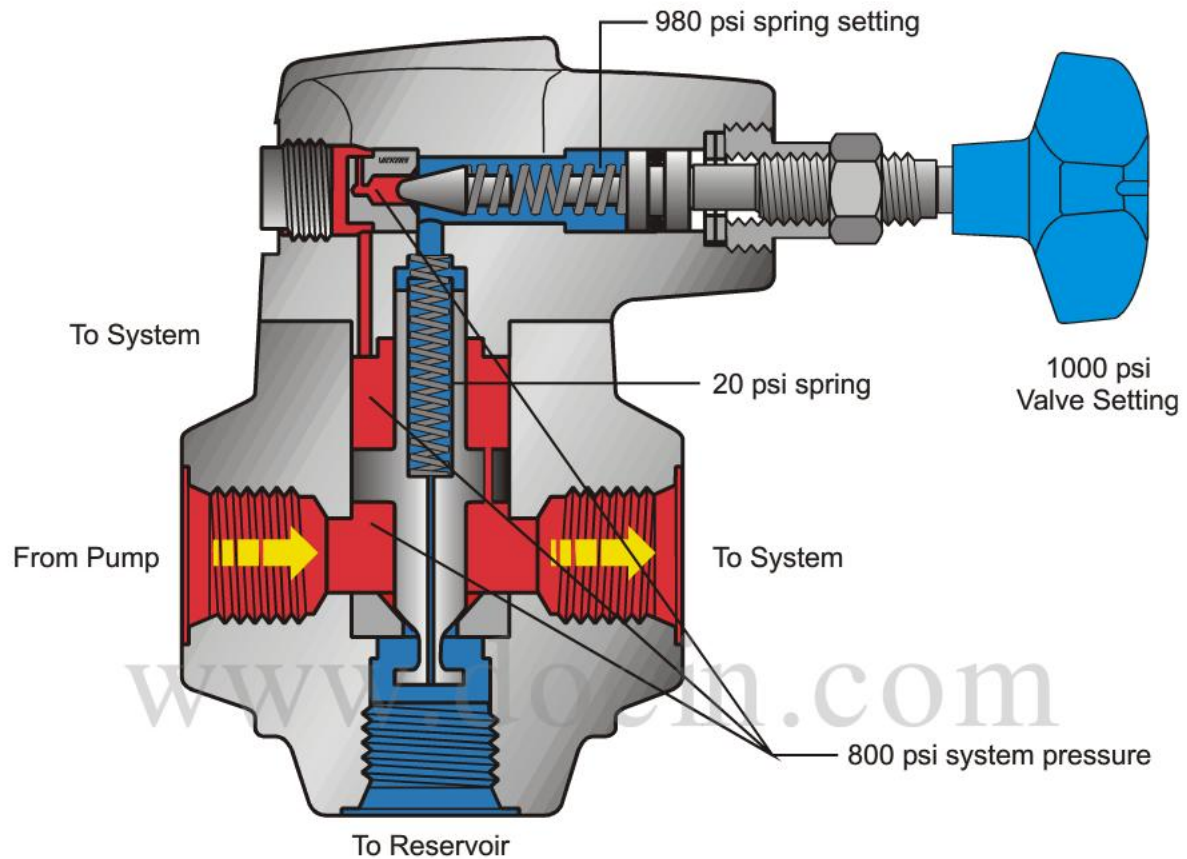


Figure 10-4 Pressure is balanced across the piston

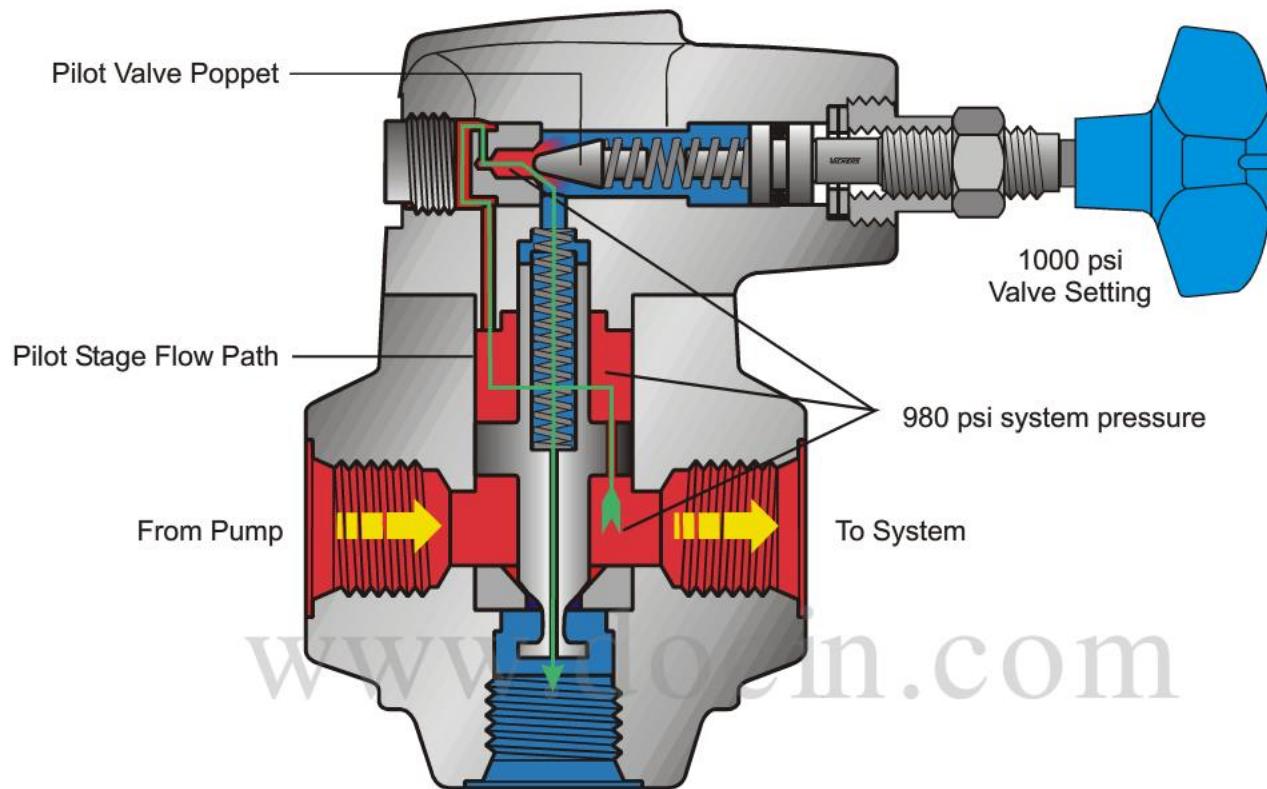


Figure 10-5 Pilot stage pressure setting is reached, and pilot valve opens

COPYRIGHT © (2001) EATON CORPORATION



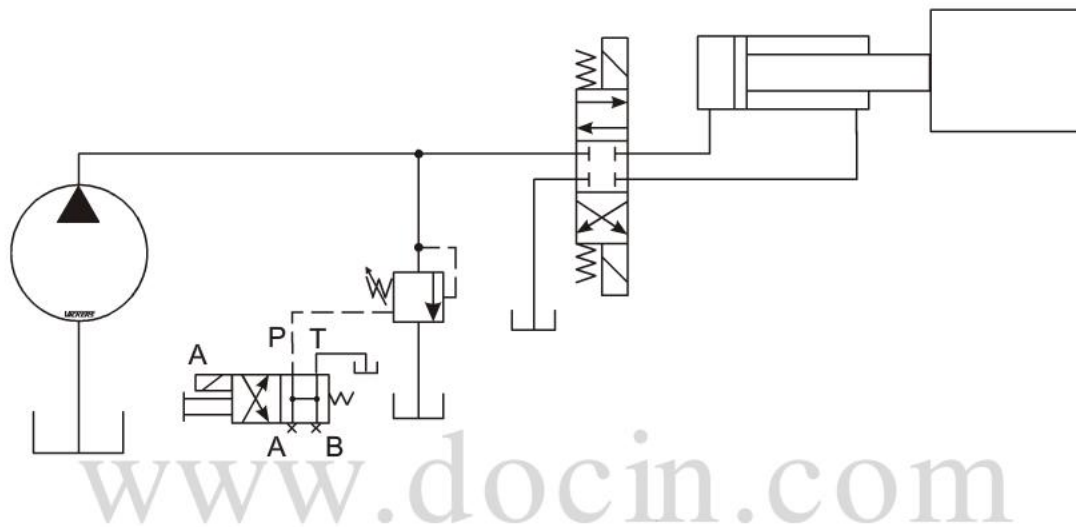


Figure 10-7 Vented relief valve circuit

COPYRIGHT © (2001) EATON CORPORATION



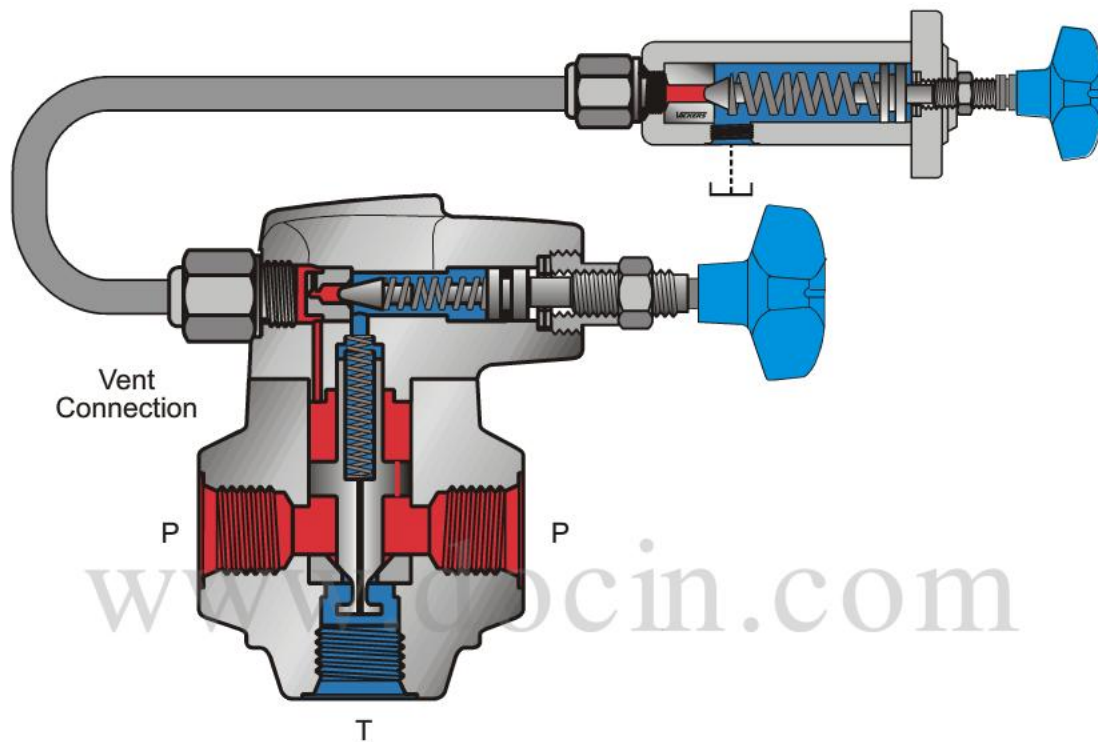


Figure 10-8 Direct acting relief valve connected to venting port

COPYRIGHT © (2001) EATON CORPORATION

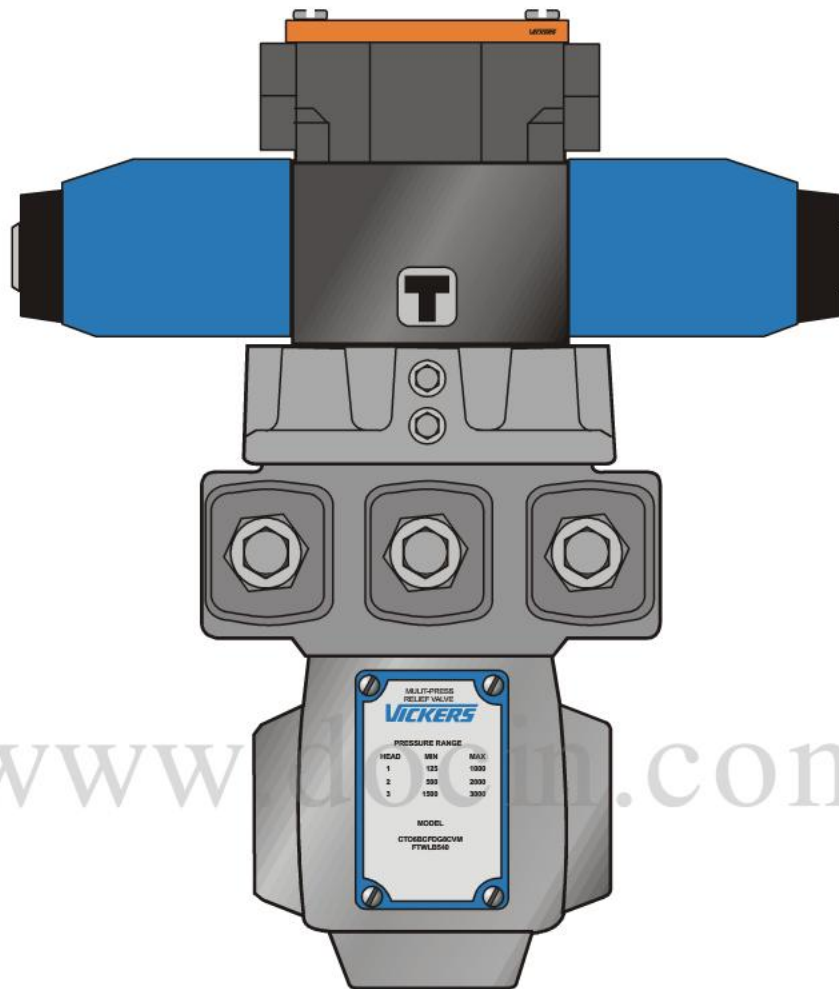


Figure 10-9 Tri-pressure relief valve

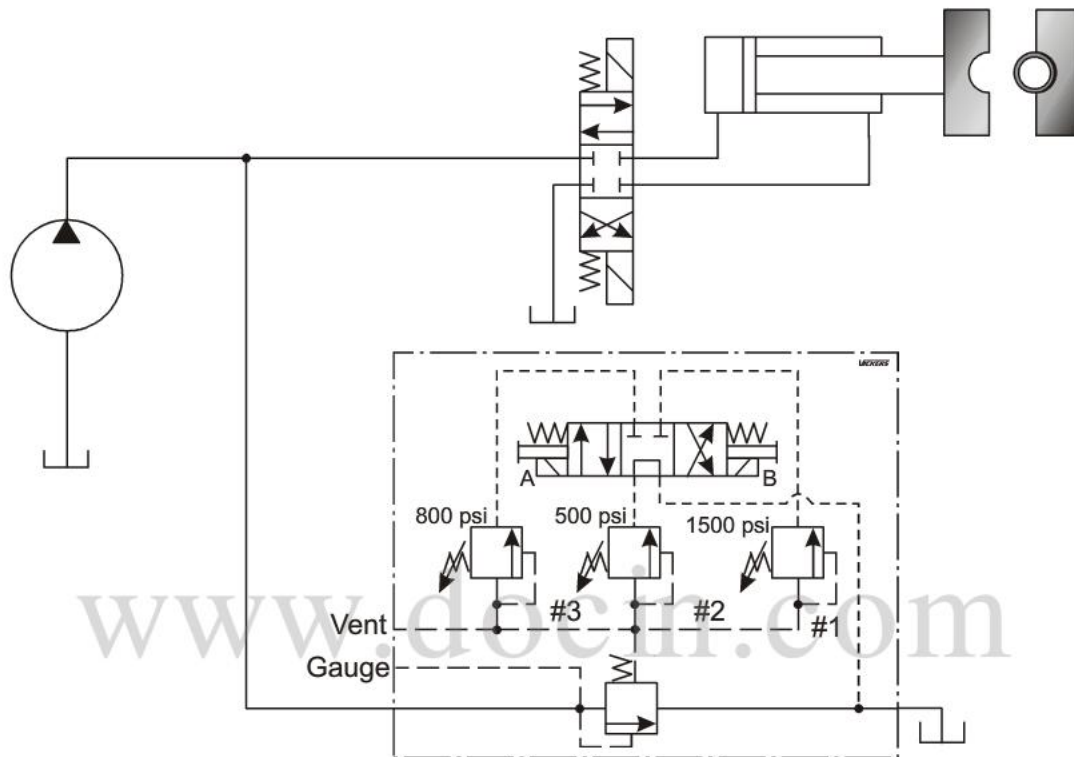


Figure 10-10 Tri-pressure relief circuit

COPYRIGHT © (2001) EATON CORPORATION

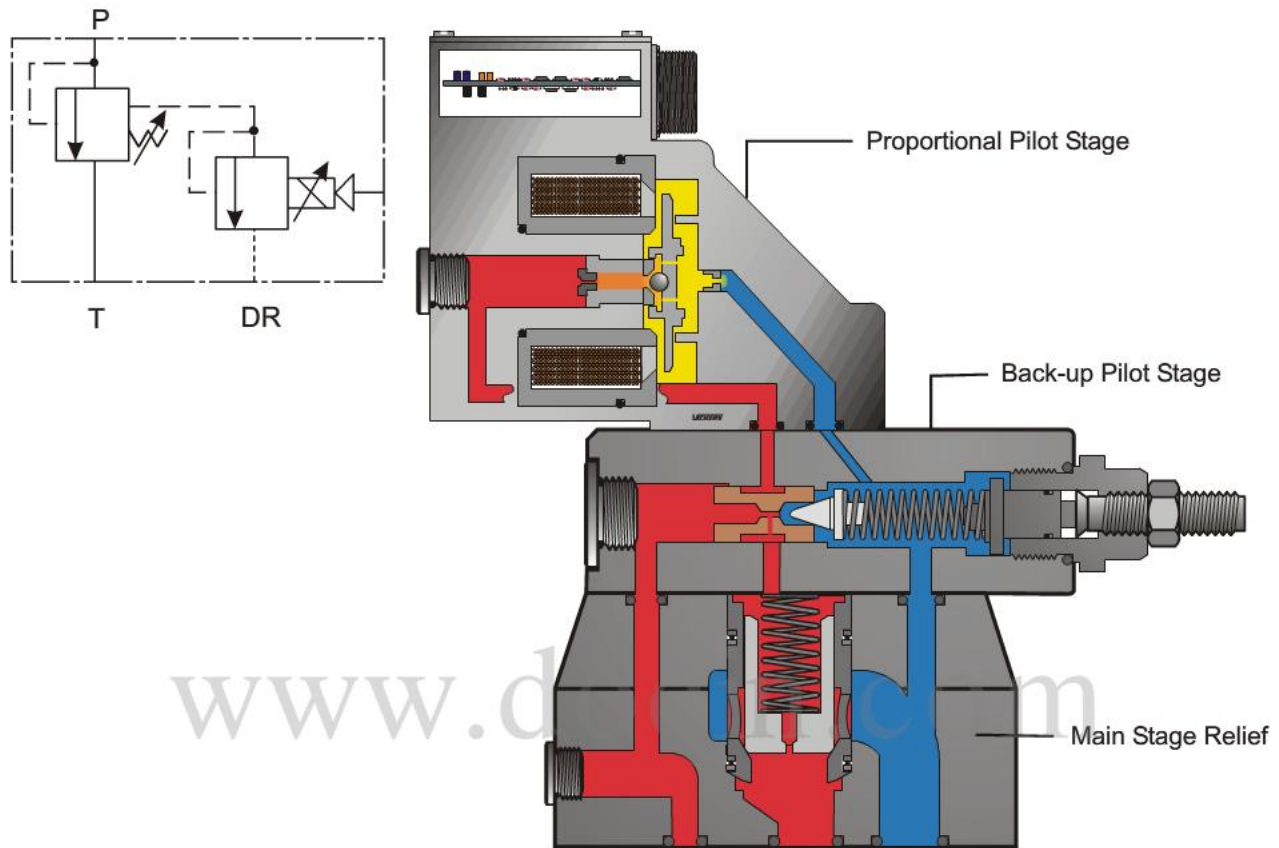


Figure 10-11 Proportional pressure relief valve

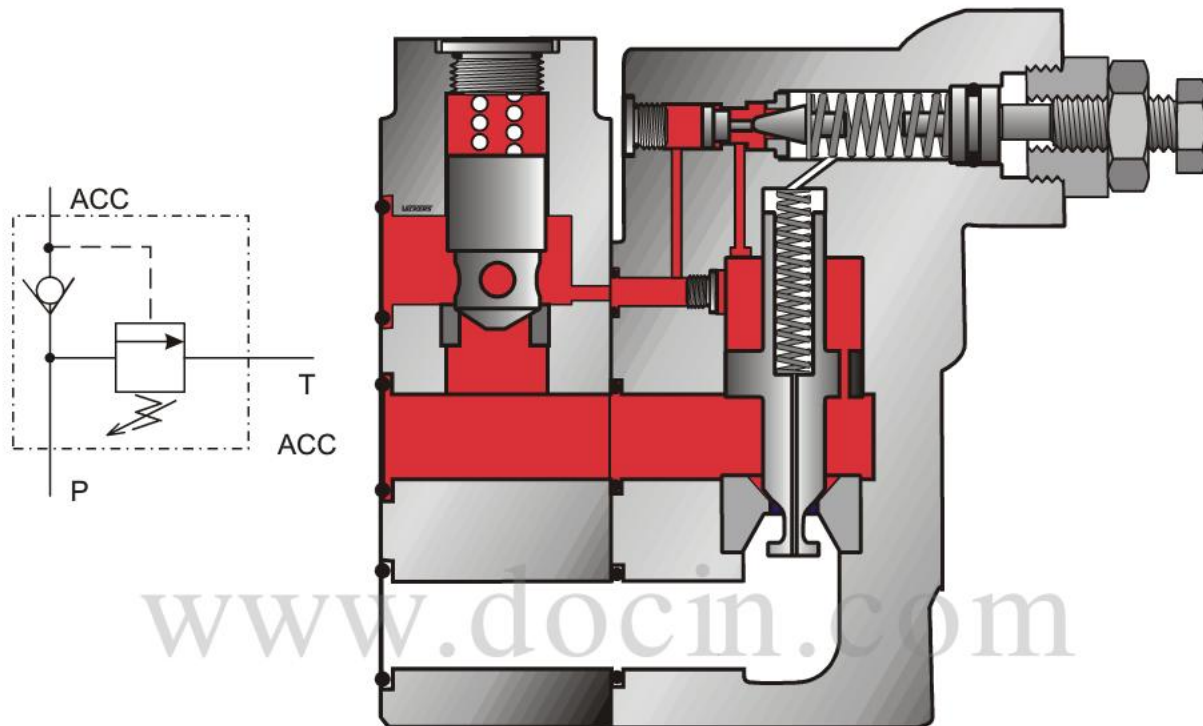


Figure 10-12 Unloading relief valve

COPYRIGHT © (2001) EATON CORPORATION

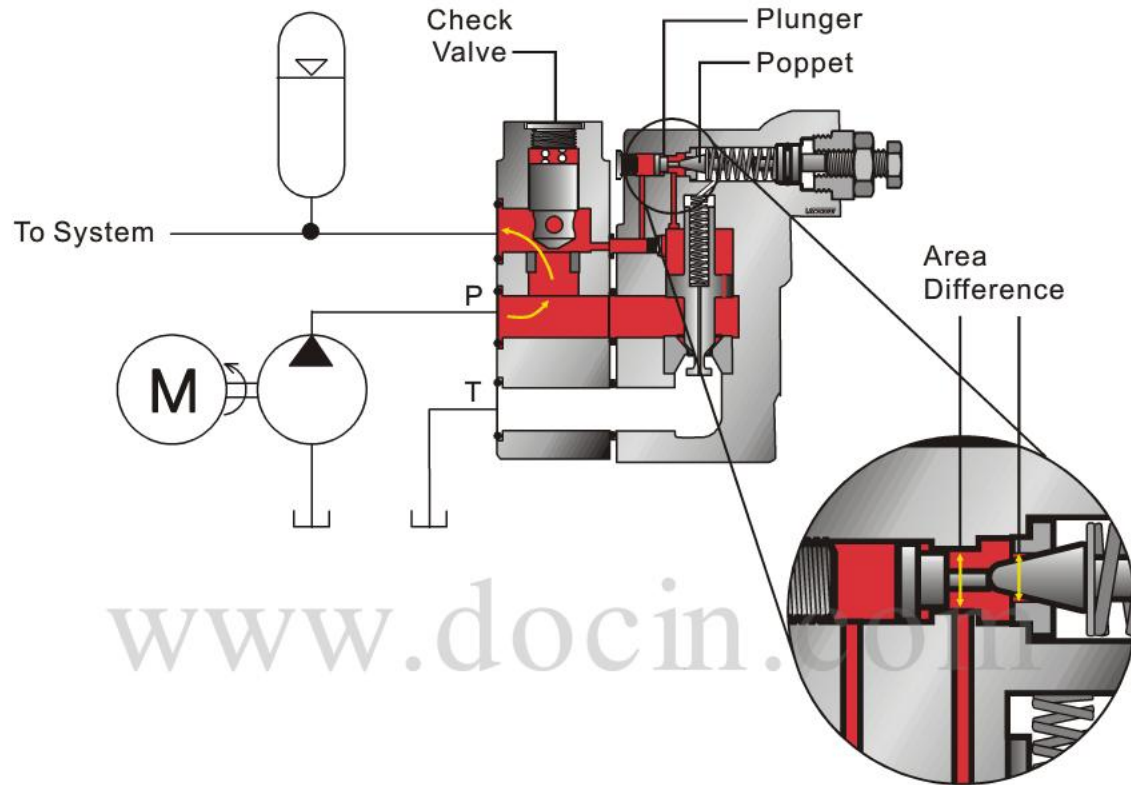


Figure 10-13 Area differential between plunger and poppet

COPYRIGHT © (2001) EATON CORPORATION

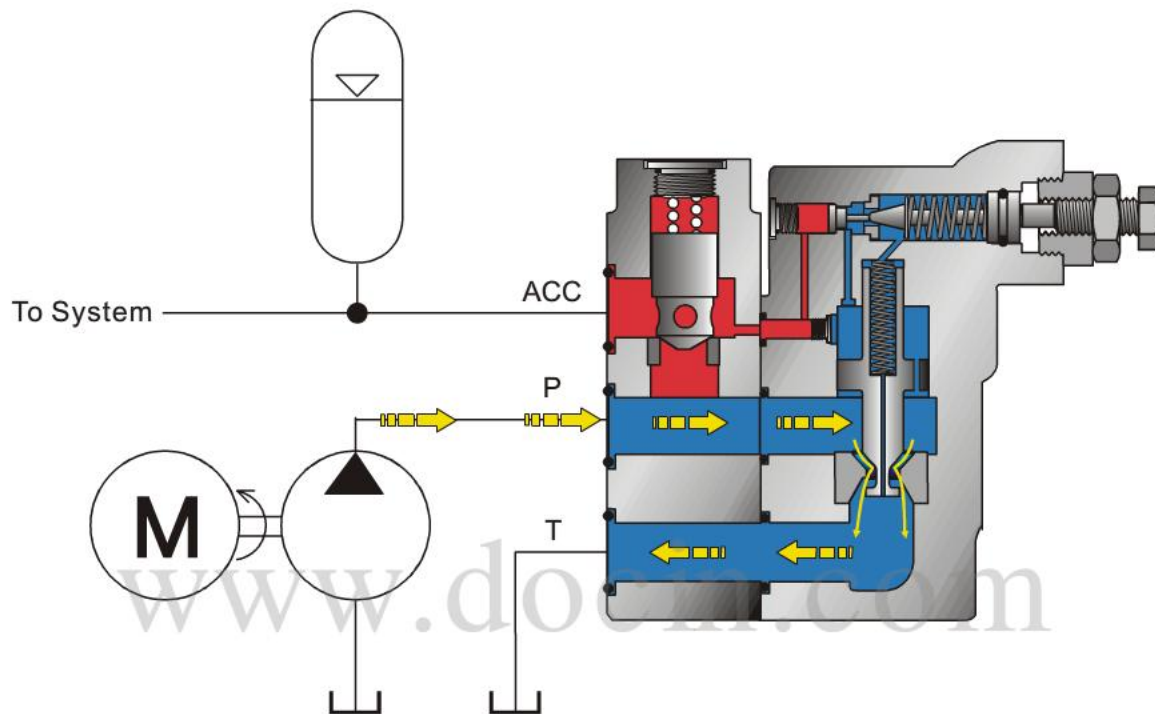


Figure 10-14 Unloading the charging circuit

COPYRIGHT © (2001) EATON CORPORATION

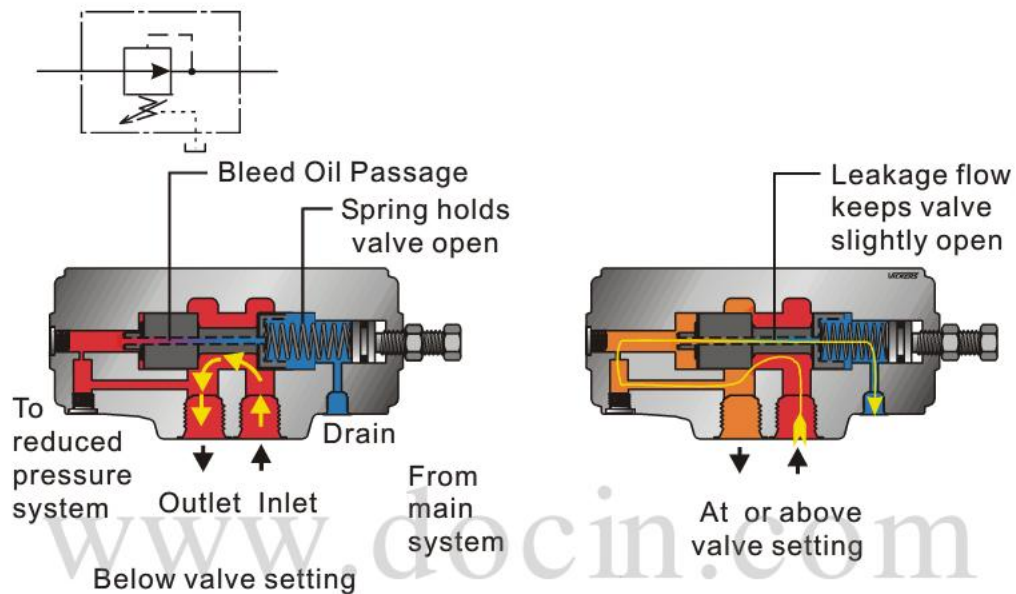


Figure 10-15 Direct acting pressure reducing valve

COPYRIGHT © (2001) EATON CORPORATION



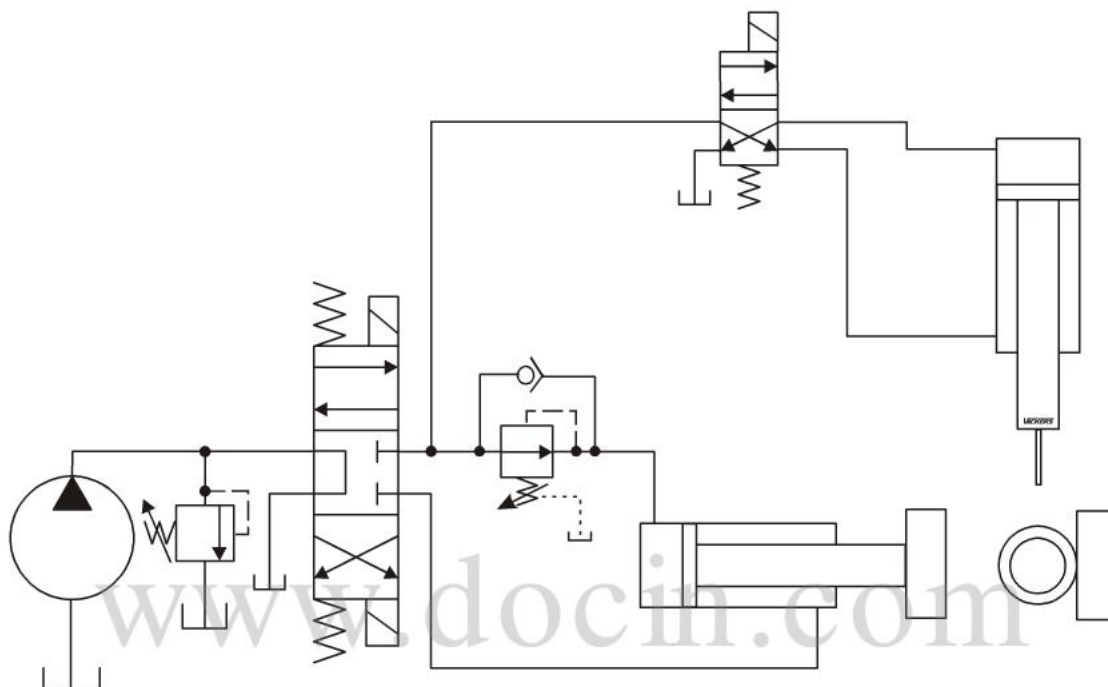


Figure 10-16 Direct acting pressure reducing circuit

COPYRIGHT © (2001) EATON CORPORATION

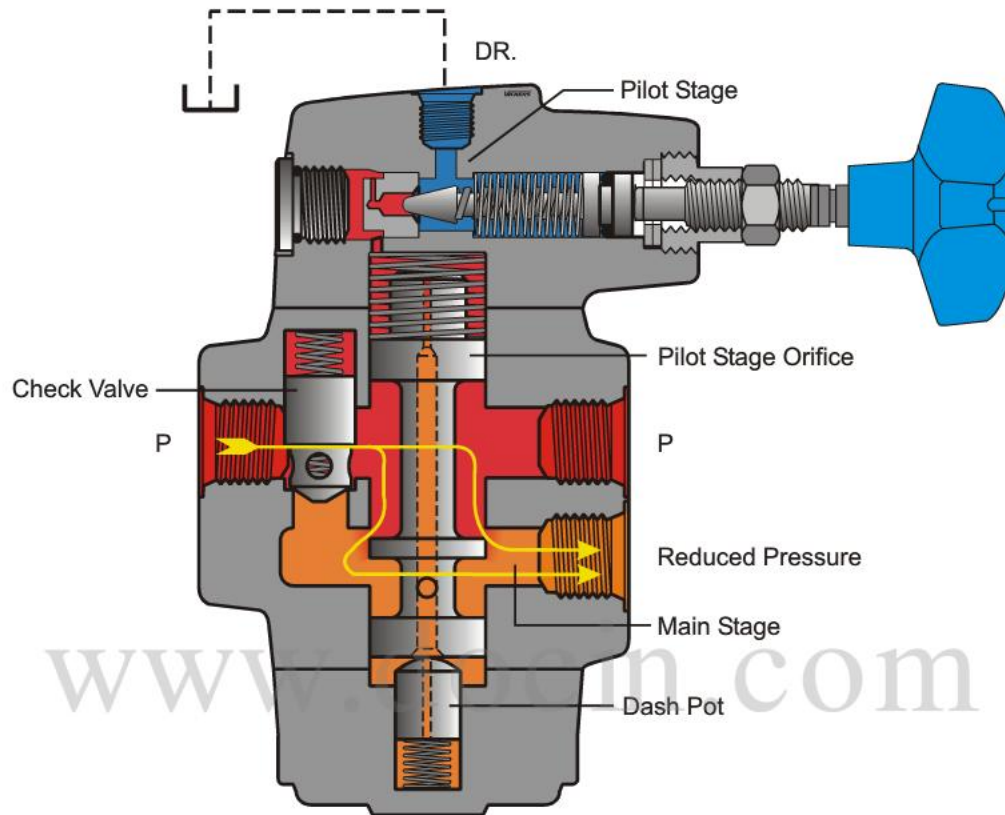


Figure 10-17 Pilot operated pressure reducing valve

COPYRIGHT © (2001) EATON CORPORATION

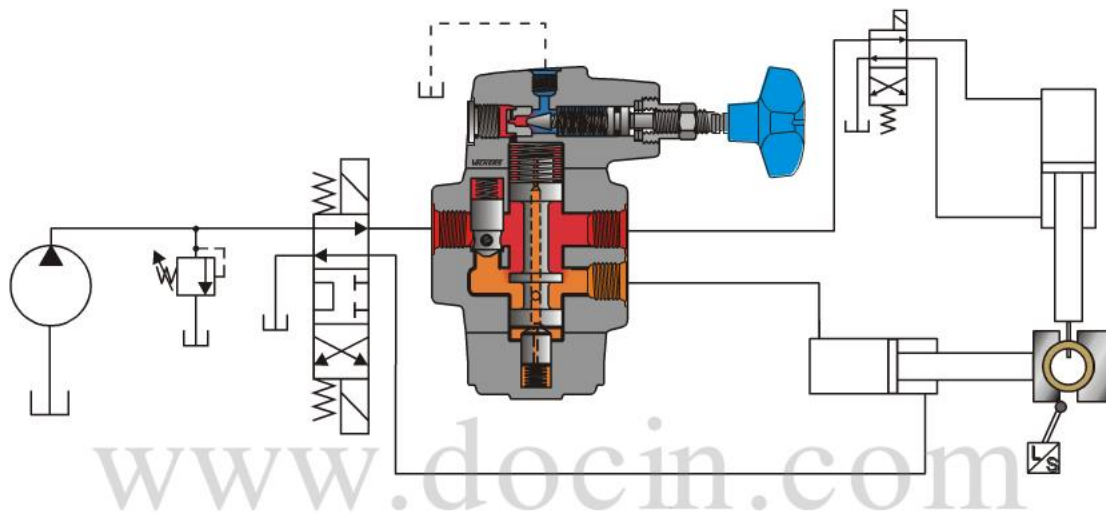


Figure 10-18 Pilot operated pressure reducing valve regulating in a clamp circuit

COPYRIGHT © (2001) EATON CORPORATION

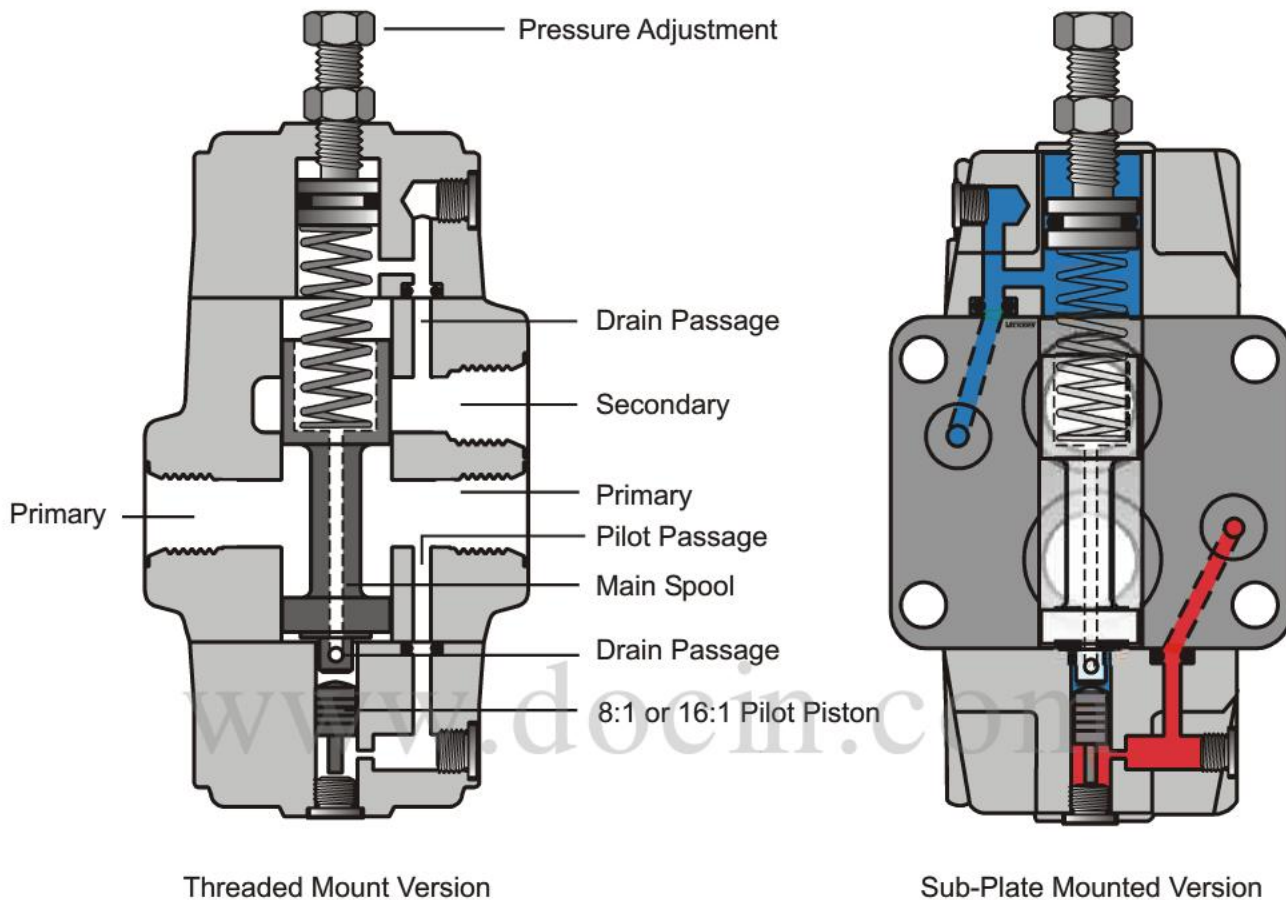


Figure 10-19 A typical direct acting, spool-type, pressure control valve

COPYRIGHT © (2001) EATON CORPORATION

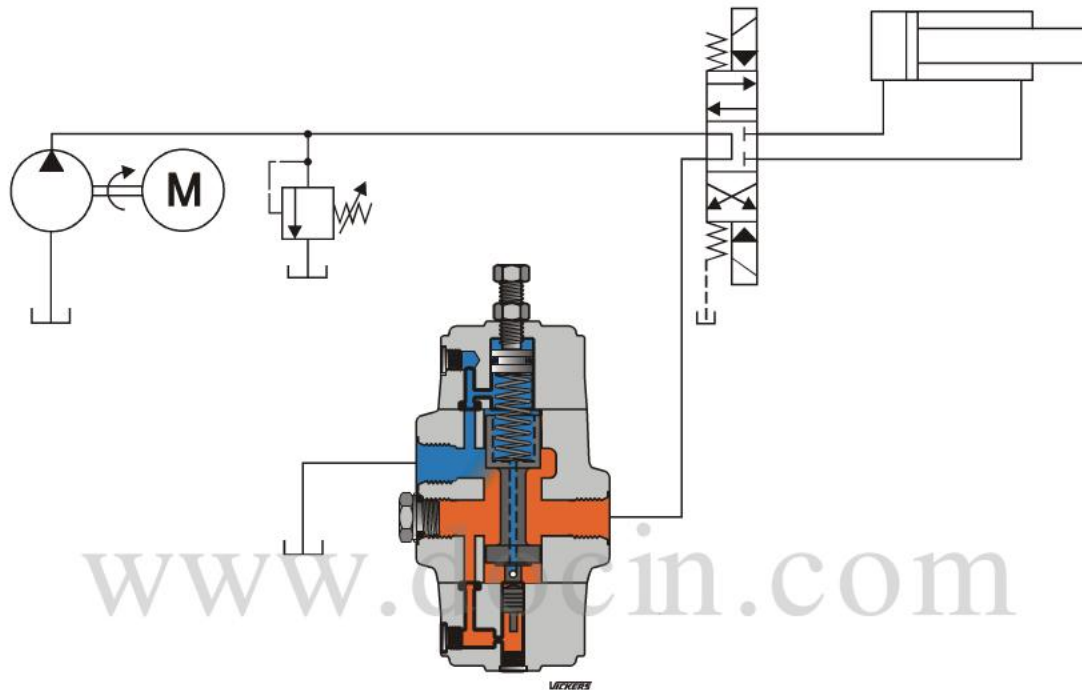


Figure 10-20 Back pressure valve

COPYRIGHT © (2001) EATON CORPORATION

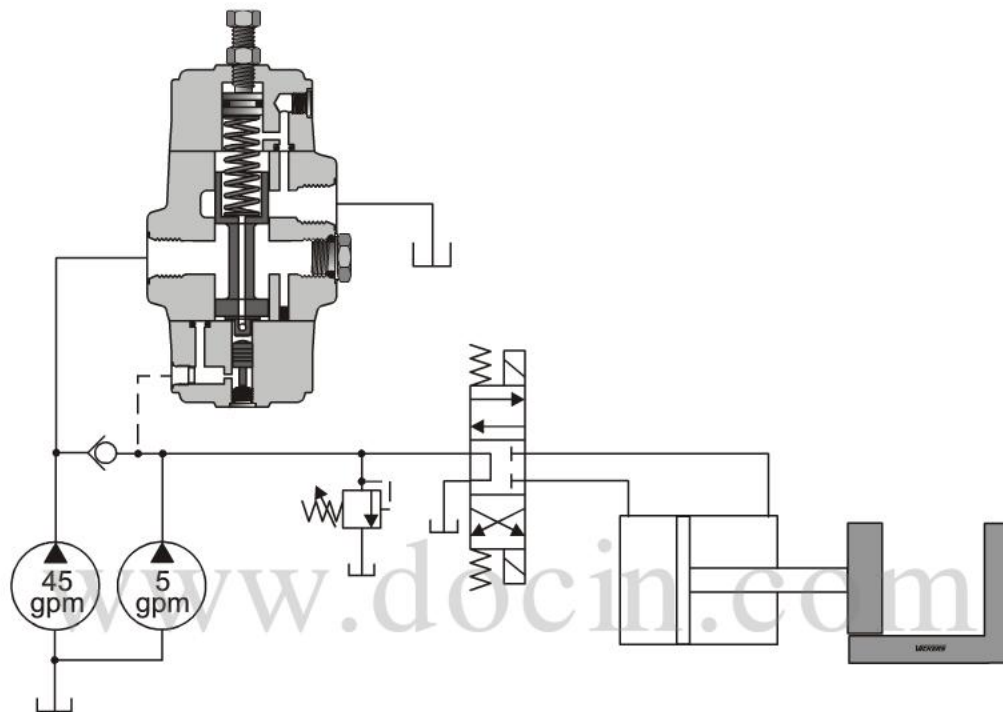


Figure 10-21 Unloading valve configuration

COPYRIGHT © (2001) EATON CORPORATION

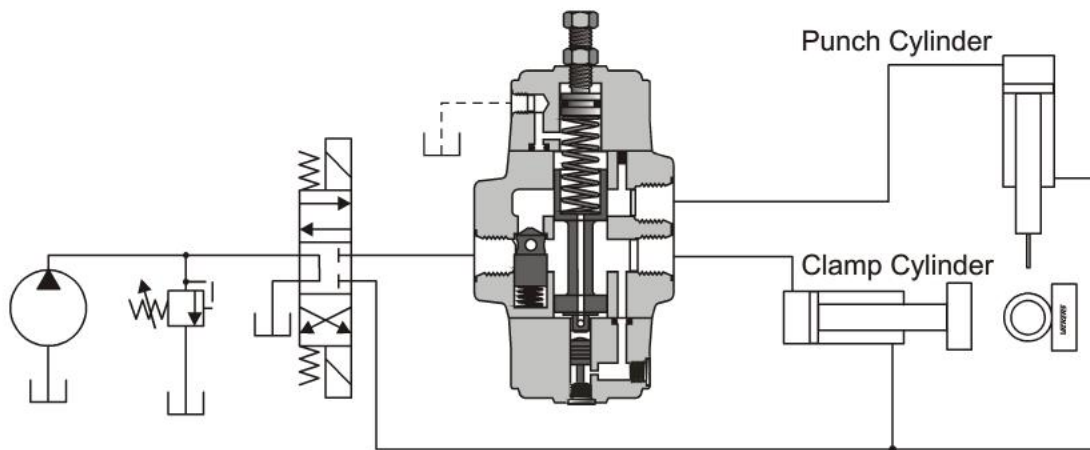


Figure 10-22 Sequence valve in a clamping circuit

COPYRIGHT © (2001) EATON CORPORATION



COPYRIGHT © (2001) EATON CORPORATION



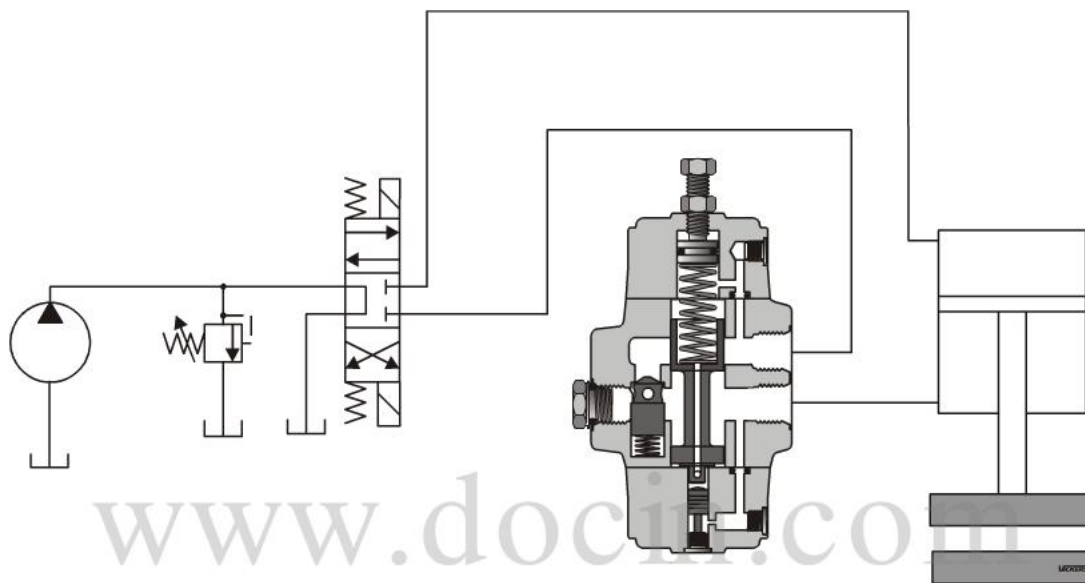


Figure 10-24 Counterbalance valve circuit

COPYRIGHT © (2001) EATON CORPORATION

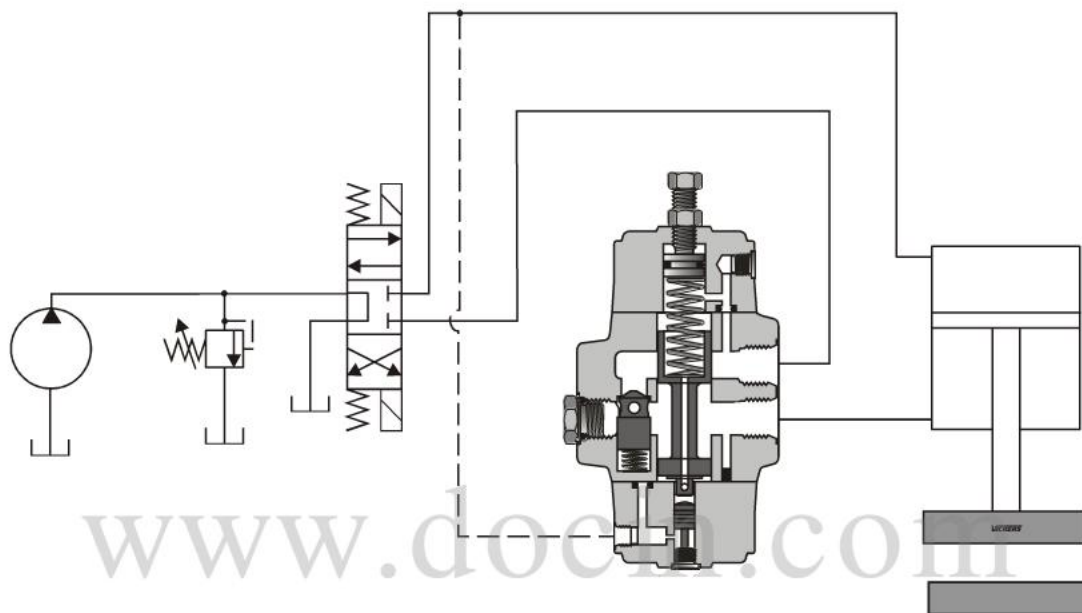


Figure 10-25 Remote piloted counterbalance valve circuit

COPYRIGHT © (2001) EATON CORPORATION

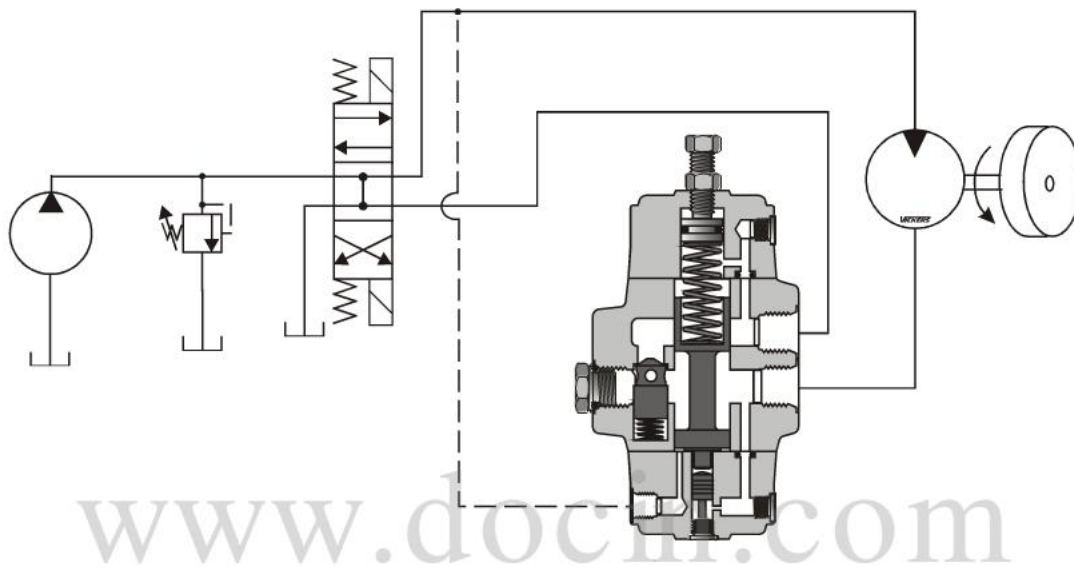


Figure 10-26 Brake valve configuration and circuit

COPYRIGHT © (2001) EATON CORPORATION